

# EtherScope® nXG

## Portable Network Expert



### Multi-technology, all-in-one handheld network analyzer

- NEW! Native Wi-Fi 6, 6GHz band, and Spectrum Analysis\* support
- Quickly test, verify, troubleshoot, and map Wi-Fi and wired networks
- Faster and easier Wi-Fi and Bluetooth/BLE site surveys with AirMapper™
- LANBERT™ Media Qualification app tests the capability of premise cabling and media components for carrying Multi-Gig and 10Gig Ethernet
- Full line-rate Multi-Gig to 10G performance testing & packet capture

### Overview

Deploying and maintaining Wi-Fi and wired network infrastructure without the right tools can be daunting... and costly. The EtherScope nXG enables engineers and technicians to get more done faster, from deployment to maintenance and documentation of their ever-changing Wi-Fi and Ethernet access networks.

With its simple operation, yet in-depth visibility, and the ability to remotely access and control EtherScope nXG, engineers can now fully enable and collaborate with “local hands” of field technicians at remote sites to expedite problem solving.

### Key Features

- Install, test, verify, and troubleshoot technology upgrades, NBASE-T, 10G, and Wi-Fi networks with advanced testing apps and purpose-built hardware
- Verify up to 10G Ethernet link performance for critical servers, uplinks and key end devices, and validate Wi-Fi network performance
- Supports full 2.4GHz and 5GHz spectrum analysis with the optional NXT Portable Spectrum Analyzer adapter.
- Empower technicians who may not have access to network management systems or other engineer-level tools to assess and document complex network deployments with multiple VLANs and Wi-Fi SSIDs
- Seamlessly consolidate and manage field test data, and integrate with network management systems via Link-Live™ Cloud Service

### Now with Wi-Fi 6/6E!



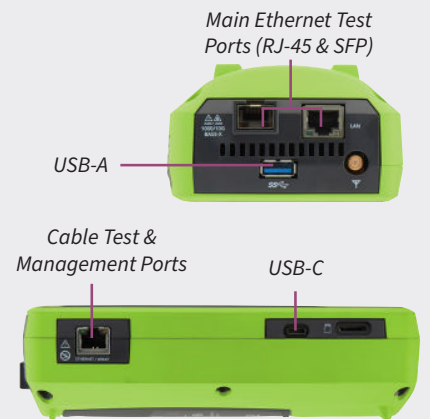
The industry's first handheld analyzer for Wi-Fi 6/6E surveying and troubleshooting, with WPA3 and spectrum analysis\*

### All-in-One Platform Addresses Multiple Technologies



An Android-based handheld network tester that verifies, discovers, maps, and troubleshoots Wi-Fi and Ethernet network infrastructures

- Native 2x2 Wi-Fi 6/6E radio that supports:
  - 802.11a/b/g/n/ac/ax Wi-Fi network connectivity
  - Analysis of SSIDs, BSSIDs, channel, client devices, and interference sources
- Ethernet port supports:
  - 10/100Mbps to 1/2.5/5/10Gbps
  - 802.3af/at/bt PoE load testing up to 90W
- Built-in Bluetooth v5/BLE radio for connectivity and conducting BT/BLE site surveys



Android is a trademark of Google LLC



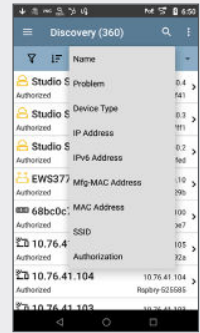
**\*NOTE:** Spectrum analysis requires the optional NXT-1000 Portable Spectrum Analyzer for 2.4/5Ghz. Enhanced site survey visualizations and filtering are available to customers with AllyCare support on their EtherScope nXG. For information about AllyCare, go to [support.netally.com/allycare/](https://support.netally.com/allycare/)

## Key Features *(continued)*

### **Wired + Wi-Fi Network Discovery, Mapping, Analysis, and Security Audits**

Instantly see what is on the network and where it is connected, by switch, slot and port number. Quickly investigate and locate “suspect” devices and identify problems associated with device misconfigurations.

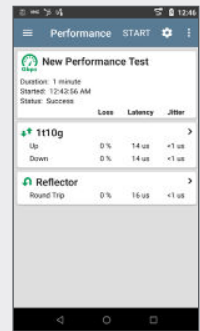
- Discover network devices across multiple VLANs and Wi-Fi SSIDs through four Wi-Fi and Ethernet interfaces upon power up
- Discovery Difference analysis in Link-Live exposes possible security risks in the network infrastructure by showing changes in connected devices
- Powerful filter and sort function with automatic problem detection identifies issues such as:
  - Duplicate IPs, Congested switch ports, and Oversubscribed Wi-Fi channels/SSIDs
  - Security issues, such as unknown switches, access points with open authentication and unencrypted APs
- Path Analysis shows the switch/router path to any connected device
- Batch authorization workflow makes it easy to identify known vs. unknown devices, enabling “who’s on my network” auditing.



### **10G Line Rate Performance Test and Packet Capture**

Verify network capacity, performance and QoS, and easily capture packets for detailed application analysis.

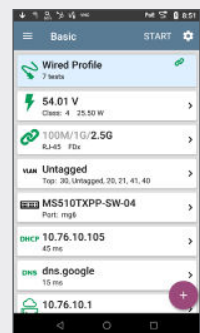
- Simultaneously generate and measure up to eight streams of IP-based traffic through the Ethernet test port to:
  - Load the network with up to full 10G line-rate traffic
  - Test for packet loss, delay, and jitter
- Supports popular iPerf network throughput testing for Wi-Fi and Wired networks
- Capture wired or wireless traffic to PCAP files for escalation evidence or analysis, with simple - but powerful - filtering and slicing controls.



### **Verify Complex Networks - Wired and Wireless**

Test automation speeds and simplifies validation and troubleshooting - so more people can solve more problems, faster.

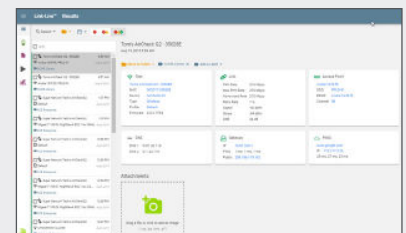
- Out-of-the-box AutoTest profiles for Wi-Fi and wired networks that can be customized for your network
- Execute multiple AutoTest profiles that shorten test time to verify multiple VLANs and Wi-Fi SSIDs
- Define and assign groups of targets to AutoTest profiles to verify performance using ping, TCP Connect, Web, or FTP



### **Simplified Collaboration, Automated Reporting**

Collaborate with staff across your organization with centralized visibility of distributed tests, speeding resolution of remote site issues.

- Link-Live Cloud Service stores test result and site data upload for automated reporting and documentation
- Simplifies report generation across media types for network deployment documentation
- Attach photos, user comments to each result, adding context for future changes and troubleshooting
- Available API enables seamless data integration between Link-Live and trouble-ticket or network management systems



## Recent Enhancements



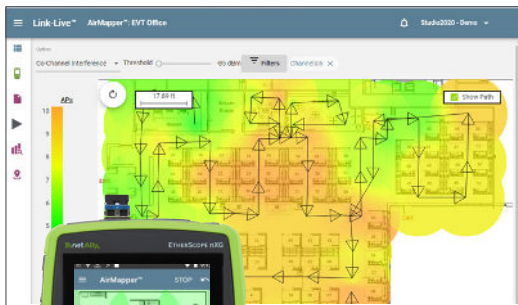
## Native Wi-Fi 6 and 6GHz Support

With the introduction of Wi-Fi 6/6E the way WLAN validation and troubleshooting is done has changed. New technologies designed to improve traffic management efficiency and support for the 6GHz band were introduced, allowing for higher throughput and better performance in environments where a high user capacity is required.

Introducing the EXG-300, an improved version of the EtherScope nXG with a native Wi-Fi 6/6E radio. This new version of the EtherScope nXG includes native support for new technologies like OFDMA, OBSS, 1024-QAM, and the 6GHz band.

- Validate actual Wi-Fi 6/6E network performance by using a native 802.11ax radio.
- Gain visibility into all Wi-Fi devices working on the 2.4GHz, 5GHz, and 6GHz bands.\*
- Provides accurate 802.11 utilization and enables packet captures of Wi-Fi 6 control, management, and data frames.
- Faster Wi-Fi device discovery through the use Reduced Neighbor Reports, Preferred Scanning Channels, and the ability of getting information for multiple SSID's from a single beacon frame.
- Enhanced security validation by allowing for the use of WPA3 and Enhanced Open.

**\*NOTE:** *Wi-Fi 6/6E Regulatory Compliance Implementation of the 6GHz spectrum varies by country. EtherScope nXG 300 models are available in three versions; see Models and Accessories for additional information.*



Visualize survey data in cloud-based Link-Live Service, or in AirMagnet Survey PRO for additional analysis

AirMapper Site Survey App

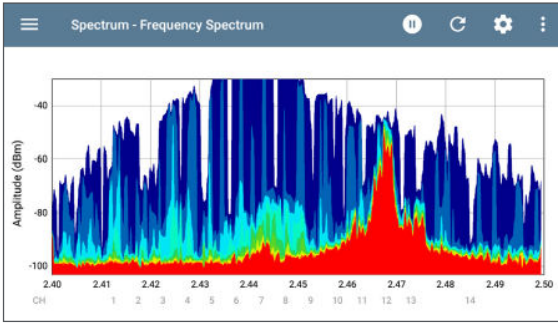
## AirMapper™ Site Survey – Now for Wi-Fi 6/6E

With the AirMapper app, EtherScope nXG users can quickly and easily gather location-based Wi-Fi measurements and create visual heat maps of key performance metrics in the Link-Live Cloud Service. Wi-Fi survey data can be imported in AirMagnet Survey PRO for detailed reporting, analysis, and predictive modeling. Simple to use, the AirMapper app is ideal for quick site surveys of new deployments, change validation, and performance verification.

- Complete faster and easier Wi-Fi and Bluetooth/BLE site surveys with an entirely mobile platform
- Perform enterprise-grade surveys without the need of a dongle or tethered device with a hardware-based platform for accurate and complete data collection
- Collaborate—easily visualize and share survey data through Link-Live Cloud Service
- Automatically identify common Wi-Fi network problems using InSites™ intelligence in Link-Live
- Simultaneous passive and active Wi-Fi surveys to gather critical site metrics and validate client experience and roaming with one survey
- Pass survey data to AirMagnet Survey PRO for more advanced analysis, planning and reporting



**NOTE:** *Enhanced site survey visualizations and filtering are available to customers with AllyCare support on their EtherScope nXG. For information about AllyCare, go to [support.netally.com/allycare/](https://support.netally.com/allycare/)*



NXG Frequency Spectrum

## Spectrum Analysis and Interference

Trying to pinpoint the source of Wi-Fi interference on a wireless network is hit or miss with the wrong tools. Through the use of the optional NXT-1000 Mobile Spectrum Analyzer, EtherScope nXG offers a view of RF interference in the 2.4 and 5GHz bands and its impact on the wireless network's overall performance. Key graphs and charts include:

**Real-Time Spectrum** - Provides a real-time view into the RF environment.

**Frequency Spectrum** – Displays real-time analysis on signals that are common during the current capture session.

**Spectrogram** - Shows intermittent spikes of RF energy over time that may be causing wireless network problems.

## Models & Accessories

### IMPORTANT NOTES:

**WiFi 6/6E Regulatory Compliance Implementation of the 6GHz spectrum varies by country.** EtherScope nXG 300 models are available in three versions: Full Tri-Band (capability across the entire 6GHz band), Partial Tri-Band (capability for only certain channels in the 6GHz band as determined by 802.11d regulatory domain information), and Dual Band Only (for countries where operation in the 6GHz band is not allowed.) Be sure to select the model that is certified for use in your specific country. Please contact your NetAlly reseller for more information.

The models shown on the table below are for the "Full Tri-Band" version. Replace "EXG-300" with the following for the other model types:

**EXG-300E**    **Partial Tri-Band**  
**EXG-300C**    **Dual Band Only (2.4/5GHz)**

### NEW! Inclusion of AllyCare Support

All new EXG-300 mainframes are sold with the first year (1 year) of AllyCare support included. Additional year(s) of support may be added. Product registration and activation is required within 30 days of first power-on.

Model Number/Name	Description
<b>EXG-300</b>	EtherScope nXG Portable Network Expert Includes: EXG-300 mainframe (FULL TRI-BAND) with one year of AllyCare support (EXG-300-1YS), Li-ION battery, G3-PWRADAPTER, SFP+MR-10G850, Inline RJ-45 coupler, WIREVIEW 1, <i>Quick Start Guide</i> , and Shoulder Bag.
<b>EXG-300-KIT</b>	EtherScope nXG Portable Network Expert Professional Kit Includes: EXG-300 mainframe with one year of AllyCare support (EXG-300-1YS), NXT-1000 Spectrum Analyzer, G3-PWRADAPTER, EXG-LR10G-HOLSTER, SFP+MR-10G850, SFP+MR-10G1310, RJ-45 inline coupler, EXT-ANT-TRIBAND, TEST-ACC, WIREVIEW 1-6, <i>Quick Start Guide</i> , and Medium Softcase.
<b>EXG-300-KIT-2PK</b>	Includes: Two EXG-300-KIT. Each unit comes with one year of AllyCare support (EXG-300-1YS). Purchase two EXG-300-1YS for an additional 1 year of AllyCare Support, or two EXG-300-3YS for an additional 3 years of AllyCare Support.
<b>EXG-300-LR10G-KIT</b>	Includes: EXG-300-KIT (with one year of AllyCare support, EXG-300-1YS) and LR10G-100-KIT (AllyCare not included). Purchase LR10G-100-1YS for 1 year of AllyCare Support or LR10G-100-3YS for 3 years of support on the LR10G-100 unit. For additional support on EXG-300, purchase EXG-300-1YS for one additional year or EXG-300-3YS for 3 additional years.
<b>EXT-ANT-TRIBAND</b>	2.4/5/6GHz directional antenna for use with AirCheck and EtherScope nXG

## Models & Accessories - continued

### Upgrade Models - Available for Current EXG-200 Owners

**EXG-300-UGD1** SPECIAL PRICING for EXG-200 owners WITH AllyCare support. Includes: EXG-300 mainframe (full tri-band) with Li-ION battery, G3-PWRADAPTER, SFP+MR-10G850, Inline RJ-45 coupler, WIREVIEW 1, Quick Start Guide, and Shoulder Bag. SKU IS RESTRICTED - NETALLY MUST AUTHORIZE QUOTATION.

**EXG-300-UGD2** SPECIAL PRICING for EXG-200 owners WITHOUT AllyCare support. Includes: EXG-300 mainframe (full tri-band) with Li-ION battery, G3-PWRADAPTER, SFP+MR-10G850, Inline RJ-45 coupler, WIREVIEW 1, Quick Start Guide, and Shoulder Bag. SKU IS RESTRICTED - NETALLY MUST AUTHORIZE QUOTATION.

**AllyCare Support - One year of support is included. Use these support model numbers for extending support at time of purchase or for support renewal.**

**EXG-300-1YS** One year AllyCare support for all EXG-300 models, including full tri-band, "E" (partial tri-band), and "C" (dual band 2.4/5GHz only) SKUS: EXG-300, EXG-300-KIT, EXG-300-KIT-2PK (covers only a single unit), EXG300-LR10G-KIT (covers EXG-300 only)

**EXG-300-3YS** Three year AllyCare support for all EXG-300 models, including full tri-band, "E" (partial tri-band), and "C" (dual band 2.4/5GHz only) SKUS: EXG-300, EXG-300-KIT, EXG-300-KIT-2PK (covers only a single unit), EXG300-LR10G-KIT (covers EXG-300 only)

## Specifications *(For full specifications, please refer to the product data sheet)*

General	
<b>Dimensions</b>	4.05 in x 7.67 in x 2.16 in (10.3 cm x 19.5 cm x 5.5 cm)
<b>Weight</b>	1.68 lbs. (0.77 kg)
<b>Battery</b>	Removable, rechargeable lithium-ion battery pack (7.2 V, 6.4 A, 46 Wh)
<b>Battery Life</b>	Typical operating life is 3-4 hours (Battery life from full charge varies depending on the feature being used); Typical charge time is 3 hours
<b>Display</b>	5.0-inch color LCD with capacitive touchscreen (720 x 1280 pixels)
<b>Host Interfaces</b>	(1)RJ-45 and (1)SFP Analysis ports; (1) RJ-45 Cable Test and Management Port RJ-45 Cable Test and Management Port; (1)USB Type-A Port and (1)USB Type-C On-the-Go Port SMA Connector (for External Directional Antenna)
<b>Charging</b>	USB Type-C 45-W adapter: 100-240 Vac, 50-60 Hz; DC Output Power 15 V (3 A)
<b>Media Access</b>	Copper: 10M/100M/1G/2.5G/5G/10G   Fiber SFP Adapters: 1G/10GBASE-X
<b>Supported IEEE Standards</b>	Wired: 802.3/ab/ae/an/bz/i/u/z Wi-Fi: 802.11a/b/g/n/ac/ax PoE: 802.3af/at/bt, Class 0-8 and UPOE
<b>Cable Test</b>	Pair lengths, opens, shorts, split-pairs, crossed, straight through, and WireView ID

©2022 NetAlly. Third-party trademarks mentioned are the property of their respective owners.

 [netally.com/products/etherscopexg](https://netally.com/products/etherscopexg)

 simplicity • visibility • collaboration

NXG-300-FL-22-V1